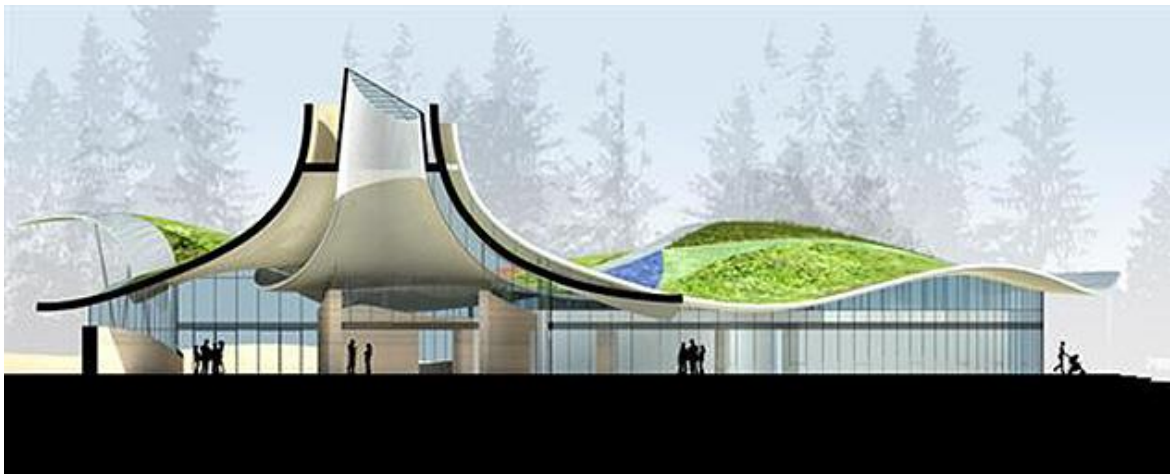


# Project Proposal

To establish the first-ever

## Faith Earth Center in Jerusalem



**Your support of will enable a new, state-of-the-art, Faith Earth Center for the benefit of over 10,000 visitors annually. Naming opportunities are available .**



## About the Interfaith Center for Sustainable Development

The Interfaith Center for Sustainable Development (ICSD) reveals the connection between religion and ecology and mobilizes faith communities to act. Based in Jerusalem ICSD works on a global basis, with current engagement in Africa, the Middle East, North America, and Europe. Currently, ICSD's work focuses on The Faith Inspired Renewable Energy Project, Thought Leadership on Religion and Ecology, and The Seminary Faith and Ecology Project.



### The Faith Earth Center

The Center, the first of its kind worldwide, will serve multiple roles:

- ✓ **Faith-based ecological workshops for seminary students** - with 200 students trained each year.
- ✓ **A destination for residents of and visitors** to Jerusalem
- ✓ **A venue for school trips** from Jewish and Arab schools.

The interactive Center will begin with the story of God's creation and the Garden of Eden, continue with Noah's ark and the flood, and then walk the participants through a series of Bible-based examples of how humanity has related to the religious imperative to care for our common home. It will offer practical solutions, so that visitors leave empowered in knowing their individual lifestyle choices can create a positive change.

The Center will attract a range of people – with interests in how technology can be sustainable, how religion can relate to ecology, and how Jerusalem speaks to care for our common home. It will also reach people from a range of ages-- youth, adults, and seniors.



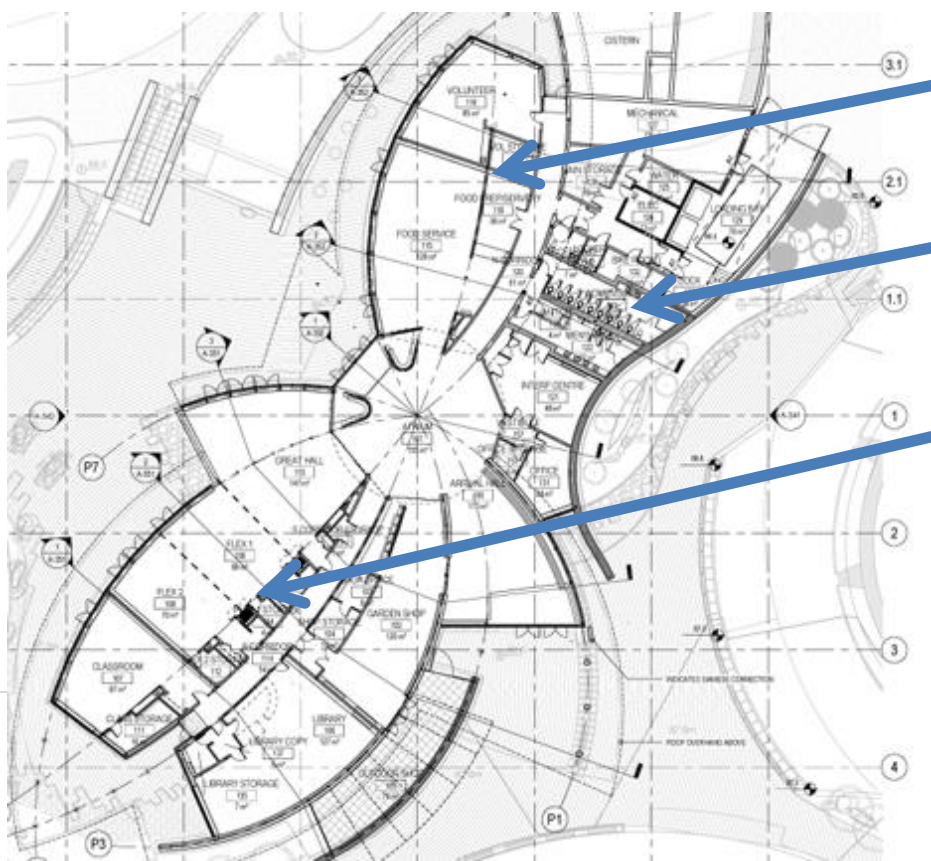


## The Faith Earth Center

### Examples of Experiential Learning at the Center

- ✓ **The Sustainability Hub** - Children entering the Center will be given a small solar powered motor that they will be able to “plug in” to different exhibits in the Sustainable Technology Hub area to help power agricultural and sanitation equipment directly from the sun.
- ✓ **The Nature Experience** – A trained educator will take groups of youth outside into the adjacent forest to sense the spiritual side of sustainable living.
- ✓ **The Irrigation Challenge** - Apparatus will be available for visitors to set up their own drip irrigation systems by plugging together the various components (motor, pipes and drippers) and they will see them working.

### Draft Plan of the Center



**Interactive Learning areas**

**Sustainable Technology Hall of Fame**

**Global Religions Impact Room**

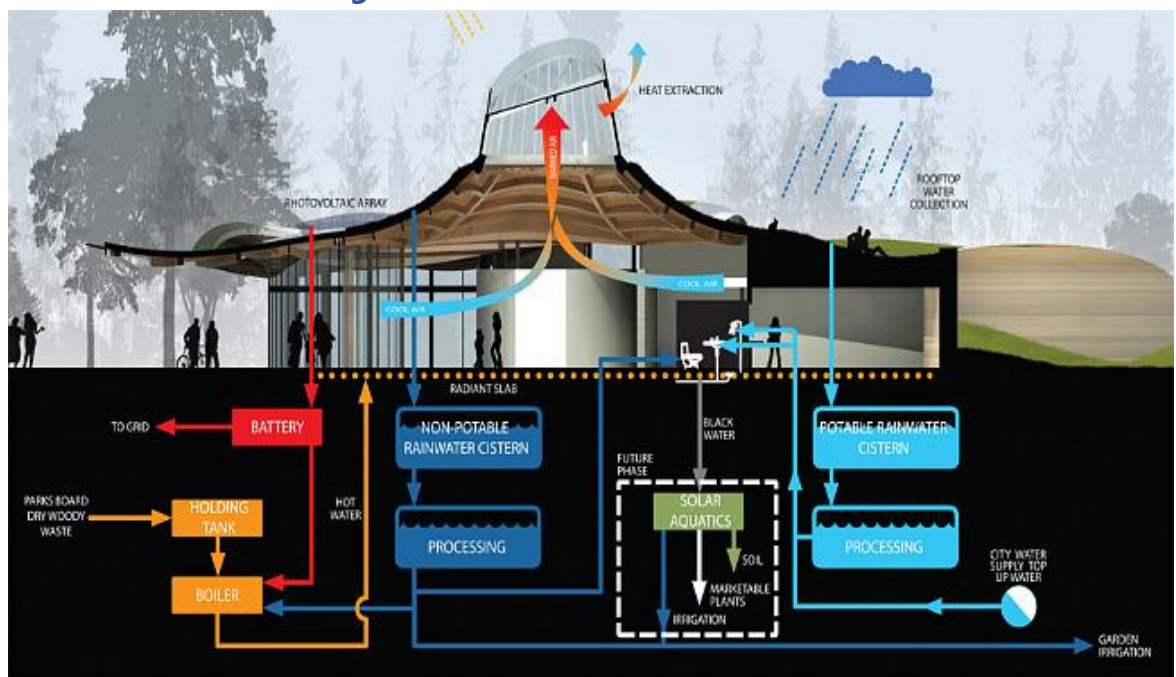
# The Nature Experience

## The Need

The World Sustainable Development Center will have space dedicated to:

- ✓ The latest Sustainable Technology – with hands on working models that will encourage all visitors to learn experientially
- ✓ The history of Sustainable Technology – with a 4D sound & light show and interactive displays showing where these have changed lives already
- ✓ A room dedicated to the role of global religions in making this happen – with teaching from the Pope and other world faith leaders
- ✓ An outdoor experience – where an educator takes young & teenage groups to feel at one with nature

## Sustainable Design



The building will incorporate the following advanced and sustainable design features:

- ✓ Water efficient design – rainwater capture, recycling grey water
- ✓ Energy efficient design – solar panels and best quality insulation
- ✓ Sustainable materials – best available and practicable

In addition, the building will be surrounded by parkland in order to enable educators to take groups outside to experience nature.

It is our intention to achieve Platinum LEED certification for the building.



The outdoor space will be designed by a leading expert on Nature Play in order to create a lasting, spiritual and impactful experience.

### Budget

	<b>USD</b>
<b>1. Construction</b>	
Land Acquisition	\$2,500,000
Construction costs 1,765 Sq.m. (\$4,000 per Sq.m)	\$9,600,000
<b>Subtotal</b>	<b>\$12,100,000</b>
<b>2. Equipment</b>	
Sustainable Development Equipment	\$1,000,000
Interactive Displays	\$1,500,000
<b>3. Total Building Cost (1&amp;2)</b>	<b>\$14,600,000</b>
<b>4. Operation Cost (10 years)</b>	
Project Management & Planning	\$500,000
Staff costs (10 full time + volunteers) – 10 years	\$5,000,000
<b>5. Total Project Costs (3&amp;4)</b>	<b>\$20,100,000</b>
<b>4. Financing</b>	
Technology Company Equipment Donation & Municipality Funding	\$2,000,000
Center entrance fees and shop	\$500,000
Shortfall	\$17,600,000

Total	<b>\$20,100,000</b>
<b>5. Funding Request</b>	
Direct Shortfall	\$17,600,000
Contribution to ICSD Operation Costs	\$2,400,000
Total Funding Request	<b>\$20,000,000</b>

Please Note:

- **Timeline**
  - Completion of planning phase – 12 months
  - Completion of building – an additional 24 months
- **Planning Phase**
  - With an initial budget of \$500,000, a detailed project plan and costing will be obtained to enable the Building Phase

*Photos in this document have been taken from the VanDusen Gardens building in Vancouver and are for illustration purposes only*